

FAR NORTH REAP

Quarterly

FREE!



Inside this issue:

- Mahi Pai comes to visit Te Hiku
- Festival of Adult Learners Night Market
- Road Safety out and about at Ahipara School - teaching students about road safety
- Hayley King, Flox artist paints murals to brighten up our public spaces
- Community news & events



Hayley King

TERM FOUR 2022

Contents

A message from our Board Chairperson.....	3
Staff profile.....	4
Festival of Adult Learning Ahurei Ākonga.....	4
Te Reo Karirikura.....	6
Te Hiku o Te Ika Revitalisation Project.....	8
Daffodil Day.....	10
Alternative Education.....	11
Kura Kaupapa Māori & Schools Support.....	13
New look for Road Safety.....	15
Our courses workshops forums services.....	16
Teen Parent Support.....	17
Engaging Priority Families.....	18
Kōhanga Reo & Early Childhood Service Support.....	19
Adult Community Education.....	20
Community Events.....	23
Contact details.....	24

Course Registration Links:
Please use the links to register for our courses.
Adult Community Education: [LINK](#) Teen Parent Support: [LINK](#)



Check out our new website!

[Home](#) [Our Services](#) [About Us](#)



Welcome, Nau Mai Haere Mai

Far North REAP is a community development organisation based in Kaitiaki. We provide excellent learning opportunities to all people of Te Hiku. Our staff facilitate and deliver high quality professional development opportunities to ensure our community receives a premium standard of education without having to travel.

Where there is a community need we will endeavour to resource and find a solution.

Follow us on:



Cover photo: Bailey Nicholas-Leighton from Kanikani Kids Dance, Islah Manufui

A message from our Board Chairperson

The Past and the Future. Learning For Life.

The Board and operational arm of Far North REAP could do well to remember that this part of the country has an interesting heritage of both book-learning and mastery of new technologies along with the sharing of cultures.

Very early in the relationship that developed between the local Rarawa tribe and the missionaries, schools were set up and children and adult men were the students. Literacy was seen as a key to the future by astute Māori and many were soon not only reading their Bibles but also able to write very well composed letters and diaries followed by financial records of their trading. Compared with the rest of the country, the local area had an early start with those skills and local schools were operating across the Far North. Men were also learning new building and engineering skills. This meant that among other things the local area was soon able to trade very astutely with the ships which increasingly came to these waters. Along with book learning there was a rapid acceptance of new technologies including owning mills to grind their new crops of oats and wheat. By 1853 there were 300 acres of wheat being grown around Kaitaia by local Māori. Horses and ploughs, plus metal tools, incredibly increased horticultural capacity. The already extensive gardens were extended and more varieties of crops increased the ability to have a varied diet and products for sale. Simultaneously

there was a sharing of languages and cultures. No doubt this was important for all the parties as understanding heritage and behaviour is always an ideal platform on which to build and sustain communities. We have this wonderful heritage of learning; Learning for Life. It is a challenge for Far North REAP to make sure that opportunities are locally available for the people of this territory so that we can be equally well equipped for a modern world which presents ever-changing needs and increasing opportunities. In many ways the patterns of the past are the podiums of the present and the perspectives of the future.

Robin L. Shepherd.
Board Chairperson



***Far North REAP
Holiday hours***

Far North REAP Office:
Closed from Thursday 22 December 2022
Open on Monday 9 January 2023

AA Driver & Vehicle Licensing:
Closed from 12.45pm on Thursday
22nd December 2022
Open on Wednesday 4 January 2023

Staff Profile

Ko Orowhana te maunga
Ko Rangihēke te awa
Ko Māmari te waka
Ko Te Rarawa me Te Aupōuri ngā iwi
Ko Manukau te marae
Ko Petēre te wāhi tapu
Nō Manukaukau me Sā Papāli'i, Savai'i Samoa
ahau

Ko Poumau Papāli'i-Smith tōku ingoa

I work in the Road Safety Team here at

Far North REAP in Road Safety Education. I love being able to serve our people in this space as it is a huge aspect of life up here for our rural communities. Being able to make positive changes in the hearts and minds of our people makes it all worth it for me. I was brought up here in Kaitiāia then moved on to study at AUT where I then moved on to live in Sydney for the next 10 years. After moving home 3 years ago I wanted to find work that really meant something to me, being able to be home and give back to the community that helped raised me is something I am very grateful for. Mauri ora!



Festival of Adult Learning / Ahurei Ākongā



The Festival of Adult Learning Ahurei Ākongā was established in Aotearoa New Zealand in 1998 with the goal of raising the profile of adult learning. Throughout the week event coordinators organise events in their communities

to celebrate adult learning and highlight its benefits.

The Aims of the Festival of Adult Learning Ahurei Ākongā are:

- to celebrate the efforts, achievements and contributions of adult learners, educators and providers at both regional and national events
- to strengthen adult and community education and raise public awareness of the rich variety of learning opportunities for adults
- to widen access to learning opportuni-

ties and encourage more people to seek advice and guidance about returning to learn

- to foster collaborative and cooperative networks and pathways among those who share an interest in adult learning.

The limitations that COVID-19 presented meant that the previous three years our Team have had to think creatively about different ways to celebrate this annual event, however this year there were no limitations so we decided to host a Community Twilight Market Party!!!

There was food and giveaways much like any other market however this market had much more of a celebration vibe, and celebrate we did. As an Adult Community Education Team we are so proud of our adult learners and their achievements, that's what drives us to continue to develop a range of quality education opportunities. It is such a privilege to support them on their journeys.

Some of the cool things we had were:

- Free kids face-painting by Bailey from Kanikani Kids Dance and Parties
- Kuia and Kaumatua Waiata performance
- The Filipino Womens Dance group

- Small local businesses selling their products
- Sewing and knitting demonstration
- Games, spot-prizes and raffle drawers

Thank you to all those that made this event possible and to the community members that came along and celebrated with us.



Te Reo Karirikura

Written and translated by
Nā Raymond McPherson

E miharo ana ahau ki ngā hunga maha e pīrangī ana ki te ako te Reo Māori me ngā waiata Māori.

E hanga ana māua ko Mark Beano Matiu ngā akomanga e rua, tētahi ki Roma Marae ia Rātū, tētahi atu ki te whare o Reap i te taone o Kaitaia ia Rāapa.

I tekau ngā wiki mā māua ki te whakaako ēnei kaupapa. Ahakoa he kaupapa hōu ki te nuinga o rātou, e tarai ana te tini o rātou ki te pupuri, ki te kōrerorero, ki te waiata noki nā ngā mātauranga o a tātou mātua tupuna. Nā te mea chara he mahi māmā, heoiano e mihi kau ana ki a koutou ngā pia, tōu timatanga tēnei, ki a koutou noki e tautoko mai ana Te Reo Karirikura.

Tihei MauriOra.

Another Language School

There is some big interest from the community to learn some basic language, waiata and culture of the Maaori indigenous peoples of Aotearoa, My tuakana elder brother Beano Matiu and I, with others put together two classes, Roma Marae Tuesday evenings and Far North REAP Kaitaia Wednesday evenings. A 150hrs session 1, 1week programme. As a second language learner myself, we had to captulate their attention and nurture their enthusiasm, firstly tikanga/protocols, pepeha/where you are from, mihimihi/greetings, kupu/words, rarangi/koorero,



Pangarau/counting. Graduation was held at Roma Marae Ahiparapara on September 11th.

Thank you to, Ma te Reo, Roma Marae trustees, Raawhiti Waiti, Manaia Designs, Anis Catering and all the Taura/students, Tihei MauriOra!!!





Māori Language Week

Written and translated by
Nā Raymond McPherson

"You might think you are lost or you have lost your identity, but NO, your Mountains your geneology, your language, knows who you are and the day will come when you will know who you really are",

Salutations to them who had the vision to present to parliament the Māori language Petition, but the fight/struggles still goes on for equity?

Simple Pepeha to try

Our people connects us to each other and our whakapapa

Tena koutou katoa

be sure to begin your pepeha with a greeting

ko te māunga (my mountain)

ko te awa/roto/moana (my river/lake/ocean)

ko te waka (my boat)

ko tōku iwi (my people/tribe)

ko tōku hapu (my sub-tribe)

no ahau (where I'm from)

ko tōku ingoa (my name)

No reira, tēna koutou, tēna koutou katoa

be sure to end your pepeha with...

Te Wiki o Te Reo Māori

"Ahakoa kahore koe e mōhio ana ki tōu maunga,

e mōhio ana tōu maunga I a koe.

Ahakoa kahore koe e mōhio ana ki tōu whakapapa,

e mōhio ana tōu whakapapa I a koe.

Ahakoa kahore koe e mōhio ana ki tōu reo, e mōhio ana tōu reo ki a koe."

Hena, e mihi kau ana ki a rātou e whariki mārīka ana te petihana nei ki te kāwanatanga I aua wā, rā tekau mā wha o Mahuru.

Ka whawhai tōnu mātou ake ake ake,

Tihei MauriMate, Tihei MauriOra.

Te Hiku o Te Ika Revitalisation Project



Andrea Panther,
KBA Chairperson outside the Awanui Park

Shovel Ready Funding

One of the purposes of the shovel ready funds distributed by government was to ensure that communities remained buoyant with the fear of covid and closing of businesses. This has certainly been one of the outcomes in Awanui! The businesses there, including the Awanui Dairy & Takeaways, has had an increase in turnover due to the destination park in Awanui's reserve!

*As a result of Awanui's
'new look', local business are
experiencing an increase
in foot traffic*

If you drive past in the weekends, the place is packed with whānau enjoying the park, having picnics, using the BBQ and enjoying takeaways on the bright new tables. This is only going

to increase further once the new pump track is created, the new carpark is finished, and the extra tables are installed before December when the project comes to an end. On the southern facing wall of the Dairy, Hayley King will be painting an incredible flox artwork representing the bird life linked to Awanui. We are looking forward to the three cultural artworks being installed in Awanui prior to Awanui Day this year. The last project to get underway will be the new boardwalk beside the Bakerman Café.

The Orana block wall fence is the next art mural that Hayley will transform with her flox artworks. Another art piece will cover the Brown's Pharmacy wall depicting Kaitaia's history over the decades. Kaitaia has two more cultural artworks to be installed, the market square (which includes planter boxes, umbrellas, smart poles for generators to

More murals in Kaitaia

make improvements for pedestrians and the Saturday market place) and the town square which has only just been secured with the transfer of ownership of the old Pak'n Save site into council.

There are young Māori artists getting prepared to paint the two toilet blocks in Ahipara on the main road coming in and at the Korora Park. Another success story of one of our amazing artists is that this project has given them the opportunity to kick start their art business as they were previously relying on a benefit. The talent in our community is outstanding and it has been such a pleasure

working with so many gifted and talented artists working in Kaitaia, Awanui and Ahipara. Ahipara's Korora Park is also a destination park that is absolutely packed every weekend with celebrations making the most of the pumptrack, the whale park and BBQ setting. The community are looking forward to the last project being completed with Korora Street being closed to traffic, a new carpark and

Funding spreads to Ahipara

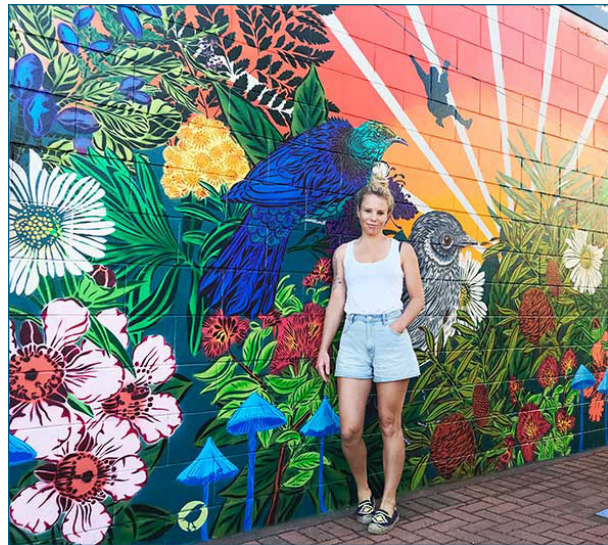
footpaths to complete, keeping in mind access for all including wheelchairs and pushchairs. Imagine how well an ice cream, drinks/coffee or food business would do parked up there most weekends?

With minimum requirements for Sitewise as one of the criteria to work for council, the Te Hiku Revitalisation project has allowed 35 more businesses to gain this qualification and to offer Health & Safety training so that our people and our businesses have more opportunities to tender for local government work. Our tradies are not out of work by any means; it just gives them more opportunities. It will also allow our council to select local tradespeople to carry out their projects instead of large organisations who are often outside of our Te Hiku area. This has all been possible due to our outgoing Mayor John Carter taking a risk and believing in a group of passionate, local people to project manage FNDC funds on their behalf. This project has won the FNDC 3 awards so far and is shortlisted for an international award in Melbourne next month as well as another planning award in NZ. The key theme resulting in these awards includes community

engagement which has continued throughout the entire two year project through fortnightly updates in the Northland Age, monthly community meetings in Kaitaia through the



*Awanui Dairy gets a facelift
by New Zealand Flox Artist
Hayley King*



New Zealand Flox Artist, Hayley King

Kaitaia Business Association (KBA), Awanui through the ratepayers group and Ahipara through Ahipara Aroha and then of course social media posts. It certainly has been a tremendous team effort from everybody involved.

*Written by
Andrea Panther, KBA Chair Person*

Daffodil Day 2022

*He rau ringa e oti ai -
Many hands make light work.*

Our community is amazing. On Friday 31st August our volunteers and community champions from Bridgestone Tyres, 9TEE Mile, Super Liquor, Te Hiku Hauora, Marie Berghan, RSA Ladies, Kaitaia Family Budgeting Services, Pompallier Catholic School and Far North REAP Staff joined forces to collect for Cancer Society's Daffodil Day.

We held a Daffodil Day Mega Raffle which was taken home by Ruth Shepherd. Thank you to our sponsors - Rip Curl Kaitaia, Essentially Flowers, Brown's Pharmacy, Far North Pharmacy, Building Safer Communities, Waipapakauri Bombers, Whatuwhiwhi Top 10 Holiday Park, Folders, You are all amazing and so very generous. Thank you to those that joined us to Paint the town Yellow - Far North Pharmacy, DD Gold Kaitaia, 9Tee Mile, Brown's Pharmacy, Salvation Army Family Store and a massive thank you to Signs of Life Kaitaia

for sponsoring the prize. The Winner was Far North Pharmacy, with their stunning "Lounging Lady" Congrats to Henrietta and the team at Far North Pharmacy

The grand total raised was \$6,602.60.



*Henrietta Russell,
Far North Pharmacy*



Alternative Education

Our amazing engagers

These past two terms have seen our students busy within our Amazing Engagers space. We have had a constant seven regular attendees who have settled well within our space.

They have added a second gym day to their schedule which now sees them attending Kaitaia Strength & Fitness on a Monday, Club Physical on a Wednesday, keeping them engaged in a fitness regime.

Our students have been learning about Marae tikanga, protocol, their pepeha, sustainability and how to live off the land and sea.

Term 2 saw them travel out to Rangī Point for a marae noho at Waiparera Marae. Whilst there they had a lesson on the Matariki calendar, how to read the calendar and look at the stars. From there they were able to catch the Hokianga Express, experience the Manea museum, view the carvings and the history of Kupē's footprints, the 4D theatre where it was made so real, learning about the SS Ventnor ship that sank with 499 Chinese people on board, to playing on the sand dunes on the way home.

The following day we all travelled to Mitimiti

where the tamariki visited the Urupa to see the Chinese memorial, gathered kutai and learned how to fish if they didn't know already. They were catching Ngakoikoi at Mitimiti so we travelled to Te Karaka and fished off the wharf where they were catching Karati. Students got to experience pig hunting that night with some locals and caught three pigs, releasing one.

During this term we also travelled to Urupukapuka Island to experience the reserve over there, walking one of their many tracks and students were able to visit the Gumdiggers Park and learn some local history.

Term 3 has seen us take another trip to follow on in their history lessons. We stayed at Omanaia Marae in South Hokianga. We visited the Mission Station and Stone Store in Kerikeri on the first day. The students were really engrossed in the visit, taking in everything that the guide was telling them. They were reading all that was on the wall and asking a lot of questions to the guide. Following that visit we went to Te Ahurea (formerly Rewa village) which is



straight opposite the Stone Store. They got to experience what a Pa site may have looked like back in the day.

The following morning we met up with the guides from Te Roroa at Arai Te Uru where you could see the entrance of the Hokianga Harbour, what a magnificent site. We spent a good hour there learning the history of that

"Our students have been gaining a wealth of knowledge through an alternative way of learning and they are enjoying it whilst doing so".

area, the lighthouse, how the ships could tell when to come in and the significant Maori names to this area. We then travelled to Waipoua Forest where we were given the guided tour. There is nothing better than learning from the people that live and breathe the area and can give us the true history of Tane Mahuta, the Waipoua Forest and all it encompasses, including the scientists involved and the Kauri dieback affecting our native forests. We think our students will now be looking for red headed gnomes if they ever went to the forest on their own. Following



that visit it was back to Kerikeri to watch the movie Muru which is based on Tama Iti and the raids, then dinner out for our students. We had to catch the ferry across and back, this being the first time for many, and they enjoyed that experience as well.

In July we had a Hauora day at Far North REAP, unfortunately it was raining and flooding that day but those that attended enjoyed it tremendously.

We were blessed to have Karen Murray teaching Rongoa māori and weaving, Natural Oora teaching us natural healing and stress release using rakau, and Rose Maihi who is a spiritual healer based in Kaikohe.

We have been fortunate to be included in the Noho Taiao that have been available to schools where we were able to participate in planting trees around the lake, learn how to look after the environment and travelled up to Cape Reinga on a bus hearing beautiful korero about the different Iwi.

Our students continue to work on their Education Perfect Programme and we have now introduced them to Te Kura Pounamu formerly known as the Correspondence School.

The students also keep up with their wellness not only with the gym but also trips to scooter



tracks, basketball courts and rugby fields. They are also continuing with their cooking lessons and maintaining the community garden here at Far North REAP Term 4 they will continue learning about environment sustainability and we have engaged the Experiencing Marine Reserves (EMR) to come on board and help

us to broaden our students learning. They will begin by having classroom activities, pool sessions and then eventually the open sea with a trip scheduled at the end of November to the Poor Knights Island.



Kura Kaupapa Māori & Schools Support

Toitū Taiao | NCEA

Toitū Taiao | NCEA was developed as an iwi led solution-focused initiative to help address the impact of learning interruptions on NCEA outcomes for taitamariki in our rohe as a result of COVID and related whānau situations. It is also part of our Iwi approach to education initiatives based on the broader "Marau Taiao" kaupapa.

The noho marae wananga are embedded in te ao Māori with deliberate culturally responsive pedagogy and mātauranga Māori to provide authentic, connected experiential learning in local environments.

The funding provided by Ministry of Education, ensured that there were no cost barriers for taitamariki and their whānau; transport, healthy kai, the marae and school venues, and resources all being provided.

Being able to pay the delivery team meant we could engage specialist kaiako and tuākana who committed to the kaupapa for the duration of the wananga. Being marae-based ensured a positive and safe learning environment where the group of Te Taitokerau taitamariki needing additional NCEA support would feel comfortable. In addition to ākongā gaining 12-14 NCEA credits at Level, 1, 2 and 3 in four days. Several other outcomes were important for us; practicing tikanga, the manaaki and tiakitanga demonstrated within the group that supported all to achieve, the whanaungatanga connections made through education, taitamariki completing the full wananga and aspiring to go further, improved relationships and understanding of parents and caregivers



about current education systems, the commitment and care shown by kaiako striving to improve education outcomes for Māori.

Some of the feedback from students:

"I am more motivated and confident to do my work, I actually like maths. I have learnt focus skills and skills for future NCEA assessments"

Mahi Pai came to Te Hiku

Kia Ora e te whānau, he maha ngā kaupapa miharo i tū i te wiki o te reo Māori ki Te Hiku o te Ika! Tēnei te mihi nui ki te kaupapa o Mahi Pai. He tino miharo ngā taniwha ki te kanikani, ki te waiata me te karawhiu i te reo rotarota! Anei ngā whakaahua o te rā nei ki te Marae o Koroukore ki Ahipara. Anei te hononga kia kite ā rātou mahi pai ki rohe kē: @mahipai_ "Taniwha Mahi Pai" "Taniwha, haere mai!" E rere ana ngā tai o mihi ki a ANT Trust nā koutou te kaupapa o Mahi Pai i whakarangatira, i hāpai kia kawe te reo tākaro, te reo hari i roto o Te Hiku o Te Ika. Haramai tētahi āhua!

Greetings all, Te Wiki o Te Reo Māori saw a number of amazing events held in Te Hiku, including the performance(s) by Mahi Pai, a kaupapa Māori initiative that use waiata, and kanikani to entertain, uplift and bring joy to our whānau and tamariki. What's more special, is that

"I didn't realise how much credits you could attain in such a short time when you put your mind to it."

Organisations involved with this initiative: Te Rarawa, Ngai Takoto, Ministry of Education, Te Aho Tu Roa, Far North REAP, Tinairaka Ltd and Te Kura Taumata o Panguru.



they deliver in te reo and sign language! Here's a couple of snaps of their performance at Koroukore Marae in Ahipara. Here's a link to check out more of their kaupapa: @mahipai_ "Taniwha Mahi Pai" "Taniwha, haere mai!" A big mihi to ANT Trust for organising the event and supporting Mahi Pai to deliver uplifting kaupapa to our whānau and communities in Te Hiku. How awesome!



New look for Road Safety Branding

Our new identity for road safety campaigns both for the Far North District, as well as Northland as a whole, is based on **Papatuanuku**, earth mother and protector of our environment.

Far North REAP Road Safety embarked on a journey to 'refresh' their One Tear Too Many brand and image, which included working with a graphic designer and creative team and getting feedback from stakeholders and targeted focus groups. The result is a more flexible identity and one that is traditional, contemporary, confident and empathetic.

The Road Safety education wahine has an expression that calls to our people, imploring them to be safe on our roads.

The moko kauae has also been specially created for her and gifted to us by one of our own employees, who has moved on to other areas of mahi, however has lived his life in the Far North.

The image and call to action has a powerful message to say that one death, one injury, one crash, one life lost on our roads that impacts many of our community - is one too many.



**ONE
TEAR
TOO MANY**



**KOTAHI
ROIMATA
RAWA**



Our Courses / Workshops / Forums / Services
Parent Support

MĀTUA ATAWHAI | CARING PARENTS

RUNS FOR SIX WEEKS

9.30AM - 12.30PM

WEDNESDAY 19 OCTOBER 2022

PART ONE

- Self-care and goal planning
- Whānau care planning
- Whakapapa
- Pepeha

PART TWO

S.K.I.P – STRATEGIES WITH KIDS, INFORMATION FOR PARENTS

The six principles of parenting:

- Warmth and Love: Te aroha me te mahana
- Talking and Listening: Te Korero me te whakarongo
- Guidance and Understanding: Te ārahi me te māramatanga
- Limits and Boundaries: Te tūāpapa mō te tika me te
- Consistency and Consequences: Te mahi pono – ngā hua me ngā hapa
- Structure and Security: Te hanga ao tōtika –

CONSCIOUS PARENTING

The five stages of conscious parenting

- Stage one: Unaware
- Stage two: Becoming aware
- Stage three: Ready to change
- Stage four: Taking action
- Stage five: Maintaining change



au haumanu



Teen Parent Support

Our Parent Support Team are here to support teen parents on their journey. Some of the support we offer is:

- Education support
- Training courses
- Mātua Atawhai Parenting Programme
- Advocacy
- Drivers Licence
- Passport to Life
- Child Restraints
- Back to basic living skills
- Antenatal Support
- Health & Welbeing
- Selfcare Strategies
- Housing support
- Addictions support
- Youth Justice support

If you need, or you know of someone who might need support around the areas listed above, contact Maree Dickens on mobile: 027 385 6036



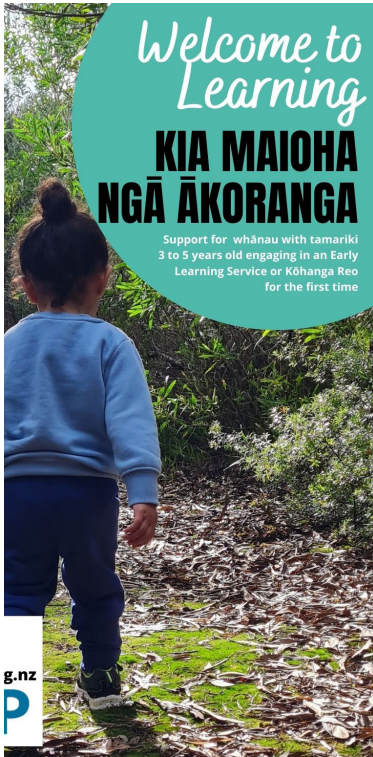
Click on the link to view the full brochure:

[Teen Parent Support Brochure](#)

A large, close-up image of a white coffee cup filled with dark coffee and foam. The rim of the cup is visible, and the text 'PARENT'S and CAREGIVER'S' is written along it. Overlaid on the coffee is the text 'COFFEE KORERO GROUP' and 'Each Monday from 9.30am - 12.00 noon'. Below that, it says 'Come along and meet other parent's | enjoy refreshments | everyone is welcome' and '***FREE***'. In the bottom left corner, there is a small illustration of a man and a woman hugging. The number '17' is at the bottom center.

Engaging Priority Families

Welcome to Learning - Kia Maioha Ngā Ākoranga



This free programme is aimed to support whānau of tamariki | children from 3 to 5 years old engaging in an Early Learning Service or Kōhanga Reo for the first time. Our co-ordinator develops an Early Learning Plan with whānau to identify their needs, values, and aspirations for their tamariki. Whānau are supported to establish foundations for their tamariki in preparation for their transition into an Early Learning Service or Kōhanga Reo. Whānau are empowered to choose a suitable Early Learning Service or Kōhanga Reo. Whānau are supported to develop a relationship and effectively transition into attending. Our co-ordinator will continue to support tamariki during their time attending. The aim is to ensure all tamariki have equitable access to high quality early learning where they can develop a strong educational foundation in preparation for starting school or kura. The programme is part of the Ministry of Education's Engaging Priority Families/Whānau Initiative.



Click on the link to view the full brochure:

[Kia Maioha Ngā Ākoranga Brochure](#)

Early Childhood & Kōhanga Reo Support

Professional Development COMING SOON

INFANT AND TODDLER WORKSHOP

with Anita Homewood

from Educational Leadership Project.

Two workshops:

28 November 4 – 7pm, Kaitaia | 29 November 5 – 8pm, Kerikeri

Coming to your inbox or watch our Facebook page and website for further information

Early Childhood & Kōhanga Reo Support

Circus Arts Play

with April Atkinson & Elizabeth Oliver from Circability Trust

This workshop aims to teach young children in early years settings some of the skills of circus performance.

Their foundation principles are play -learn and show off.

Available in Term Four on:

Tuesdays from 12 -4pm and Wednesdays from 9am-2.00pm
at your centre

Cost: \$45.00 (per centre)



Last course for 2022

Days: Monday 14 - Tuesday 15 November
Time: 9.30am – 1.00pm
Testing Day: Wednesday 12 November 2022

Road Safety Drivers Licence Course

This is a three day course with testing held on the third day. The first two days your tutor will take you through the road code and help you prepare for the Learners Licence test. To register for this course you must be 16 years or older and pay the test fee and complete your DL1 application form at the Far North REAP AA Driver & Vehicle Licence counter.

Test costs \$93.90.

*Please note: there are strict rules around I.D. requirements that we must adhere to.
Click here for information about I.D. [Waka Kotahi NZ Transport Identification Requirements.](#)*

Adult Community Education (ACE)

Please note: You must be 16 years of age or older and not be attending secondary school to register for ACE Courses

Rongoa

Maori

& Raranga

Harekeke



Rongoa Māori Dates and Times:

Saturday 29 October

Saturday 5 November

from 9am - 3pm

Raranga Harekeke Dates and Times:

Saturday 19 November

Saturday 26 November

from 9am - 5pm

Steps to Employment

WORKSHOP

Cover letter | C.V. Building | Interview Skills | Personal Development | Fun Activities and more!

Date & Time:
Weekly on Thursdays
Time: 10am - 1pm
Cost: Free



Social Media Marketing

Participate in a free two-part course, designed to simplify your social media experience. If you're a creative of any discipline and need help setting up or adapting your current social media strategy, we will develop practical steps to do so.

During the course we will cover:

- How to create posts, stories and videos on Instagram.
- Weekly content strategies.
- Refining your bio for optimal engagement.
- Ways to take online payments & basic invoicing.
- Photo editing apps.
- Creating a linktree.
- Understanding analytics on Instagram and Facebook.

Dates: Saturday November 12th & 26th

Location: Online via zoom

Time: 10-2pm

What to bring: Your phone/device to participate in practical exercises.



Workshop tutor and mentor:

Rachel Barber is a young vibrant mixed media painter located in Mangonui, Northland. She is passionate about painting and creativity and wants to see more creatives jump online to share their work.

"I have operated my business online since setting up 2 years ago. I am keen to simplify the social media experience and share my simple tech based approach to business."

Free mentoring hours are available for participants.

Register by emailing:

rachelbarberartist@gmail.com



SHINE ON
CHRISTMAS PARADE
& concert 2022

SAT
3RD
DEC

Anō Anō Presents
TRASHION
 The Upcycle Fashion Show

Friday 4th
 November
 @ Far North
 RSA



Come
 dressed
 in your
 favourite
 glam or
 upcycled
 attire - a
 chance to
 dress up!

5:30 -
 7:30pm

See what happens
 when trash becomes fashion!

Tickets available from the Eco Centre
 - 5 Bank St Kaitiaia
 \$15 adults/\$5 students



E Tū Whānau, Te Rūnanga Nui o Te Aupōuri and Ngā Pakiaka present

**RANGATAHI
 FILMMAKING
 WORKSHOP**

FREE ENTRY

Make a short film in 2 days!



KAITIAIA
17-18 NOVEMBER
10AM-4PM

AUPŌURI HOUSE
 Melba Street, Kaitiaia

To register, go to:
maorilandfilm.co.nz/etw-film-challenge/

Festival of Adult Learning / Ahurei Akonga Photo's



Mahi Pai Photo's



Contact Details

Phone: 09 408 1380

Email: reception@farnorthreap.org.nz

Chief Executive - Tahūhū Rangapū:

David Aydon, ext: 704

ce@farnorthreap.org.nz

Community Support:

Community Support and HR Manager

Lisa Jones, ext: 706

lisaj@farnorthreap.org.nz

Engaging Priority Families:

Hinemoa Tipene, ext: 707

hinemoat@farnorthreap.org.nz

Sonia Payne, ext: 700

soniap@farnorthreap.org.nz

Maggie Allen, ext 701

maggiea@farnorthreap.org.nz

Jenny May, ext: 700

reception@farnorthreap.org.nz

Marketing & Sustainability

Tonya Pene, ext: 735

tonyap@farnorthreap.org.nz

Finance Administration:

Carrie Cross, ext: 722

carriec@farnorthreap.org.nz

Lynda Tracey, ext: 723

lyndat@farnorthreap.org.nz

Education:

Schools & Kura Kaupapa Māori:

Selena Bercic, ext: 724

selenab@farnorthreap.org.nz

Alternative Education

Denise Proctor, ext: 711

denisep@farnorthreap.org.nz

Alison Frayne, ext: 711

alisonf@farnorthreap.org.nz

Website: farnorthreap.org.nz

Address: 33 Puckey Avenue, Kaitaia

Adult Community Education:

Manager - Simone Edwards, ext: 718

simonce@farnorthreap.org.nz

Heidi Barriball, ext: 714

heidib@farnorthreap.org.nz

Ariana Smith, ext: 713

arianas@farnorthreap.org.nz

Parenting Support:

Manager - Simone Edwards, ext: 718

Maree Cook Dickens, ext: 714

mareed@farnorthreap.org.nz

Gypsy Taka, ext: 712

gypsyt@farnorthreap.org.nz

ECE & Kōhanga Reo Support:

Kylie Turnbull, ext. 716

kyliet@farnorthreap.org.nz

Road Safety:

Manager - Jodi Betts, ext: 709

jodib@farnorthreap.org.nz

Janelle Laurence, ext: 708

janellel@farnorthreap.org.nz

Poumau Papali'i-Smith, ext: 710

poumaups@farnorthreap.org.nz

Road Safety Far North Advisor

Angelene Waitohi, ext: 720

angelenew@farnorthreap.org.nz

Road Safety Educator

Ra Simeon, ext: 702

ras@farnorthreap.org.nz

Leave us a review on:

